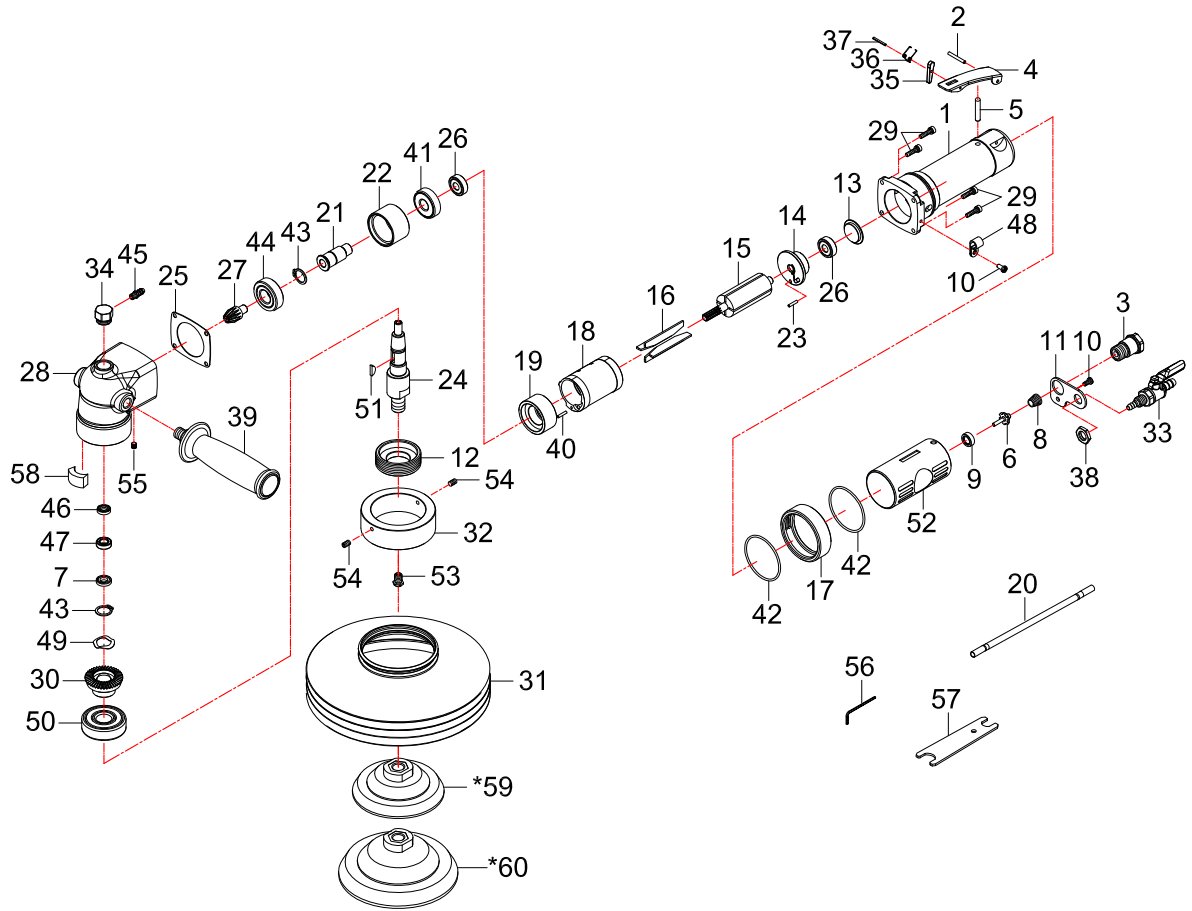


Wet Air Sander (4200RPM)



Index No.	Parts No.	Description	Index No.	Parts No.	Description
1	642W01	Motor Housing	31	642W31	Protector
2	30102	Spring Pin (3*24)	32	642W32	Guard Ring
3	5D-619203	Air Inlet	33	6N-6664W36-11S	Water Valve
4	6K-301104	Throttle Lever	34	642W34	Screw
5	500105	Throttle Valve	35	522239	Safety Bar
6	75-725146	Valve Stem	36	522212	Spring
7	642W07	Spacer	37	51542	Spring Pin (2*18)
8	73108	Spring	38	6N-6664W38	Nut
9	75-725145	Rubber Spacer	39	5D-619256	Side Handle
10	642W33	Screw(2) (M4*8)	40	61048	Spring Pin (2.5*8)
11	642W36	Fixed Plate	41	080227	Ball Bearing (6201ZZ)
12	642W12	Nut	42	OR03805200	O-Ring(2) (38.5*2)
13	500121	Cap	43	STW-15	Retaining Ring(2) (STW-15)
14	642W14	Rear End Plate	44	06202LLU	Ball Bearing (6202LLU)
15	5D-6899W15	Rotor	45	6N-6664W34	Inlet Pipe
16	61916	Rotor Blade (4)	46	6N-6664W12	Oil Seal
17	642W17	Silencer	47	0688ZZ	Ball Bearing (L-688ZZ)
18	5D-619218	Cylinder	48	6N-6664W17	Fixed
19	642W19	Front End Plate	49	WW15.5	Wave Washer (WW-15.5)
20	642W20	Pu Tube	50	06303LLU	Ball Bearing (6303LLU)
21	642W21	Clamp Shaft	51	61934	Key
22	642W22	Spacer	52	5D-619252	Grip
23	206106	Spring Pin (2.5*12)	53	6N-6664W11	Water Exit
24	642W24	Spindle	54	82246	Set Screw(2) (M5*8)
25	642W25	Gasket	55	40340	Set Screw (M5*5)
26	030120	Ball Bearing(2) (608ZZ)	56	10010	Hex. Key Wrench (2.5mm)
27	642W27	Bevel Gear	57	51228	Spanner
28	642W28	Head	58	642W37	Felt Oiler
29	642W29	Screw(4) (M4*16)	*59	642W40	Pad (4")
30	642W30	Bevel Gear	*60	642W50	Pad (5")

*Optional part

642W-0001

03.08.2010