

J E T

JPM-13CS PLANER

**708524M
230/50/1**

**PARTS LIST
ERSATZTEILLISTE
LISTE DE PIECES**

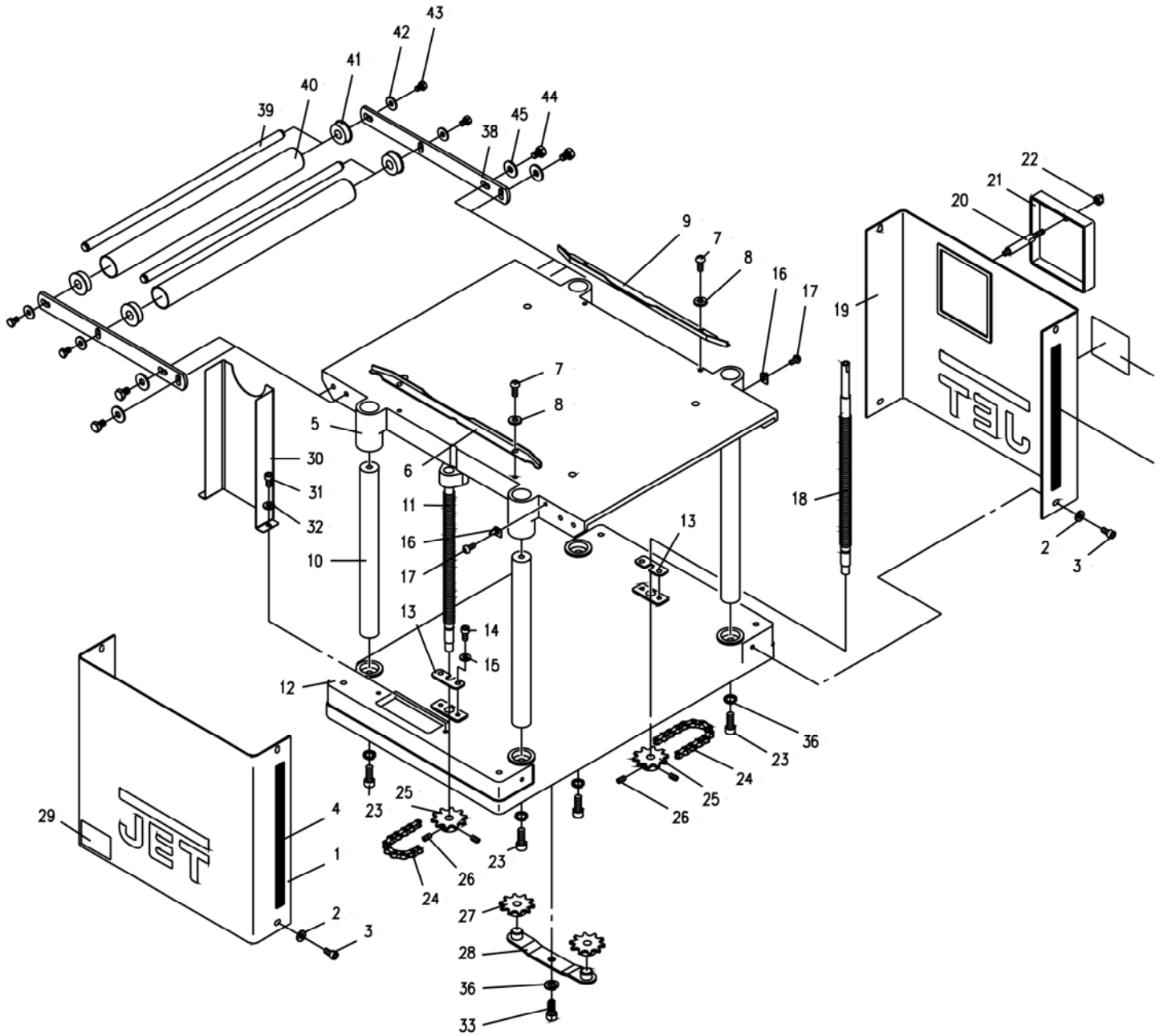
WMH Tool Group AG

Bahnstrasse 24, CH – 8603 Schwerzenbach
www.wmhtoolgroup.ch; info@wmhtoolgroup.ch
Tel +41 (0) 1 806 47 48
Fax +41 (0) 1 806 47 58



P-708524M 2009/07

Table and Base Assembly

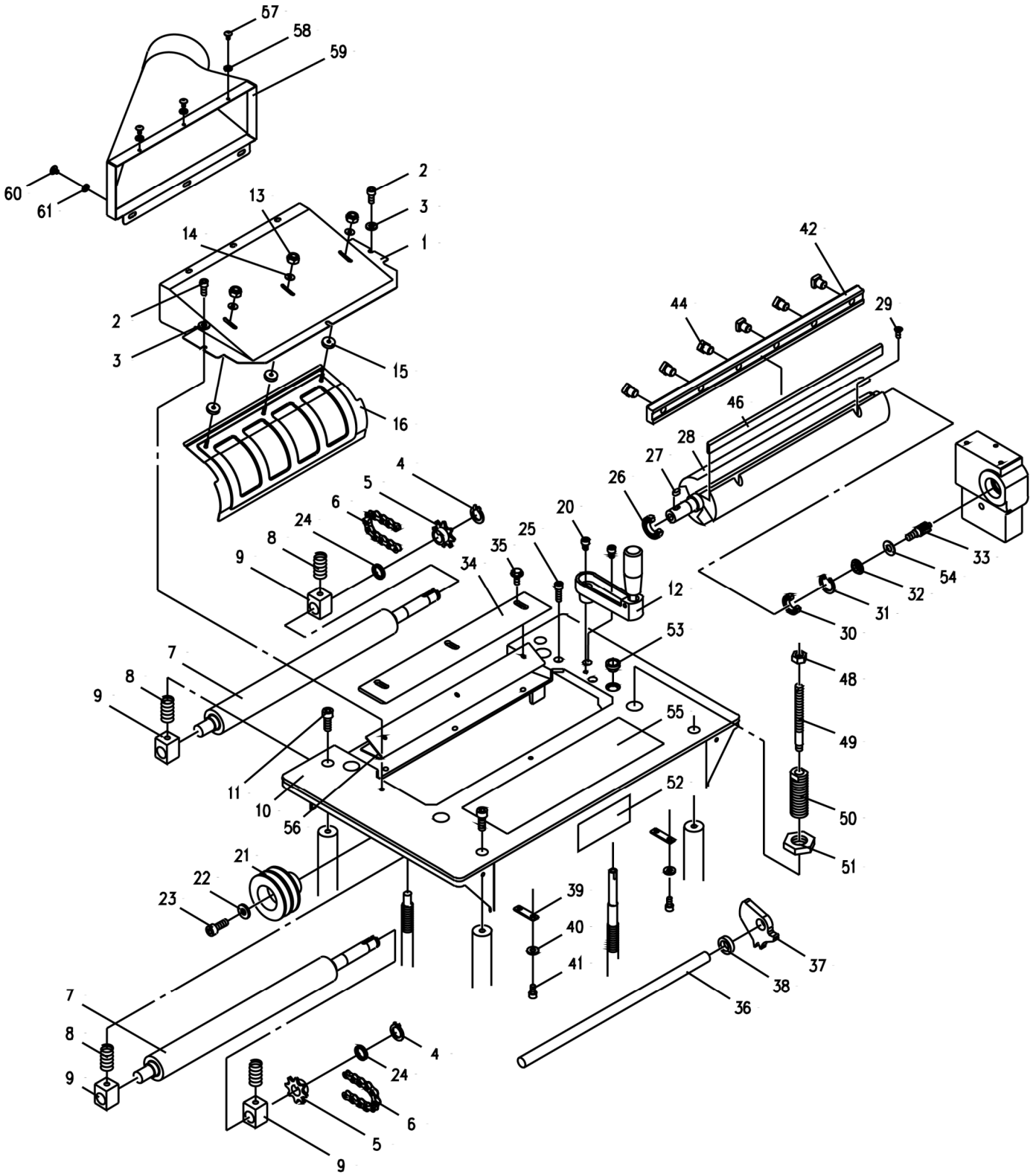


Parts List For The JPM-13 Planer/Molder

Table and Base Assembly

Index No.	Part No.	Description	Size	Qty.
1.....	MHA-B01	Cover (left)		1
2.....	TS-0680021.....	Flat Washer	1/4.....	8
3.....	TS-150301.....	Hex Socket Cap Screw	M6x8	8
4.....	MGA-B05	Scale (inch).....		1
5.....	MHA-B02	Middle Table (serial # 6082715 and lower).....		1
.....	MHA-B02A.....	Middle Table (serial # 6082716 and higher).....		1
6.....	MGA-B29E.....	Guide (left)		1
7.....	TS-153403.....	Pan Head Machine Screw.....	M6x10	4
8.....	TS-155104.....	Lock Washer.....	M6.....	4
9.....	MGA-B15E.....	Guide (right)		1
10.....	MHA-B03	Column.....		4
11.....	MHA-B04	Leadscrew (left – serial # 6082715 and lower).....		1
.....	MHA-B04A	Leadscrew (left – serial # 6082716 and higher).....		1
12.....	MHA-B05	Base		1
13.....	MGA-B09	Anchor Plate.....		2
14.....	TS-150303.....	Hex Socket Cap Screw	M6x12	4
15.....	TS-155104.....	Lock Washer.....	M6.....	4
16.....	MHA-B20	Pointer		2
17.....	TS-153202.....	Pan Head Machine Screw.....	M4x8	2
18.....	MHA-B06	Leadscrew (right – serial # 6082715 and lower).....		1
.....	MHA-B06A.....	Leadscrew (right – serial # 6082716 and higher).....		1
19.....	MHA-B07	Cover (right).....		1
20.....	MHA-B08	Stud		1
21.....	MHA-B09	Gear Box Cover		1
22.....	MHA-B19	Knob		1
23.....	TS-1504051.....	Hex Socket Cap Screw	M8x25	4
24.....	5GF-B07.....	Chain		1
25.....	PGE-B14	Sprocket.....		2
26.....	TS-152301.....	Set Screw	M6x6	4
27.....	PGE-B12	Sprocket.....		2
28.....	PGE-B10	Sprocket Idler.....		1
29.....	JPM13-130	I.D. Label		1
30.....	MHA-B10E	Pulley Cover.....		1
31.....	TS-150302.....	Hex Socket Cap Screw	M6x10	2
32.....	TS-0680021.....	Flat Washer	1/4.....	2
33.....	TS-1504051.....	Hex Socket Cap Screw	M8x20	1
34.....	MGA-B04	Scale (metric).....		1
35.....	MHA-B11	Label (speed change).....		1
36.....	TS-155106.....	Lock Washer.....	M8.....	5
37.....	JPM13-137	Running Direction Label		1
38.....	MHD-Y01A.....	Roller Frame		4
39.....	MHA-Y02A.....	Roller Shaft		4
40.....	MHA-Y02C.....	Roller		4
41.....	PJ020804	Bushing.....		8
42.....	TS-1550041.....	Flat Washer	M6.....	8
43.....	TS-1482021.....	Hex Cap Bolt	M6x12	8
44.....	TS-1490011.....	Hex Cap Bolt	M8x12	8
45.....	TS-1550061.....	Flat Washer	M8.....	8
.....	MGA-B14D	Knife setting gauge (not shown).....		1

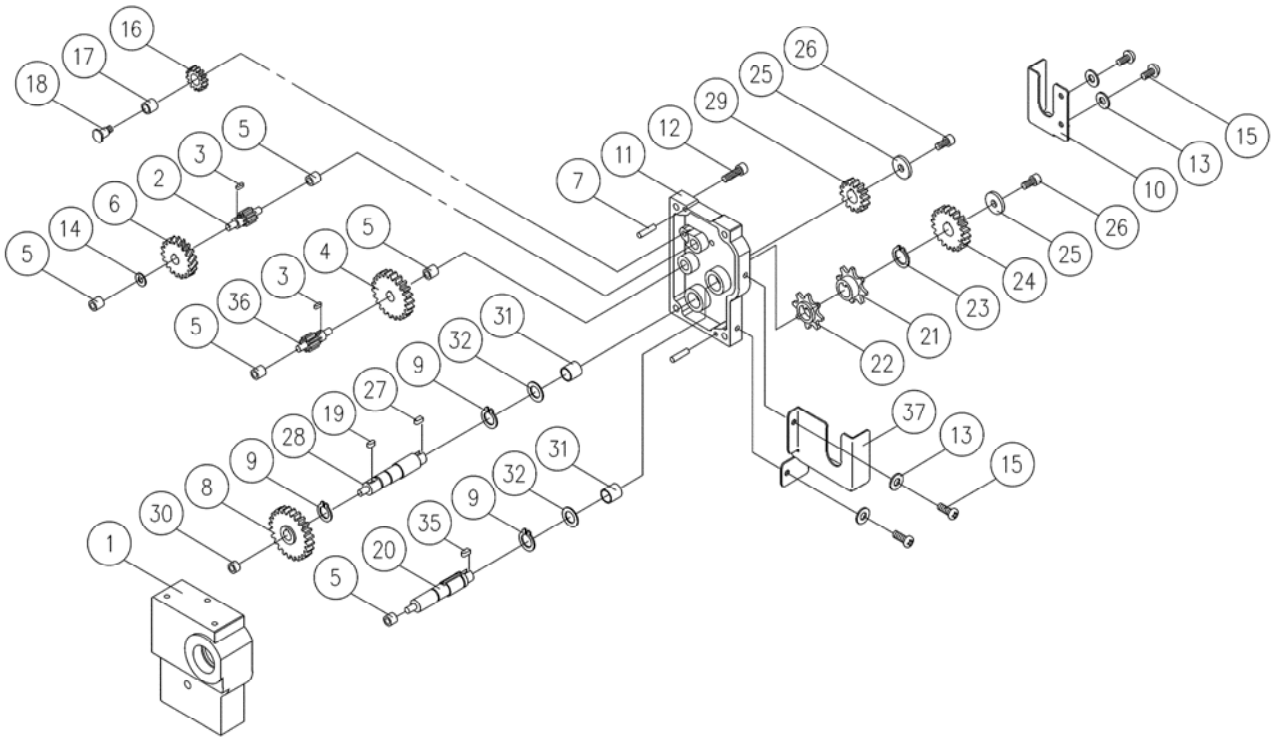
Cutterhead And Roller Assembly



Cutterhead And Roller Assembly

.....	MHA-C	Dust Hood Assembly CP.	1
1.....	MHA-C01AE.....	Dust Hood.....	1
2.....	TS-150301.....	Hex Socket Cap Screw M6x8	3
3.....	TS-0680021.....	Flat Washer 1/4.....	3
4.....	5FA-A10	C-Ring.....STW15.....	2
5.....	PGA-C17	Sprocket.....	2
6.....	5GF-B08.....	Chain	2
7.....	MHA-C02	Feed Roller	2
8.....	PGA-C09	Spring.....	4
9.....	MGA-C09	Bushing.....	4
10.....	MHA-C03	Head Body	1
11.....	TS-150404.....	Hex Socket Cap Screw M8x20	4
12.....	PGE-B19A.....	Handle Assembly	1
13.....	TS-1540021.....	Hex Nut M4.....	3
14.....	TS-1550021.....	Flat Washer M4.....	3
15.....	JPM13-215.....	Bushing.....	3
16.....	JPM13-216.....	Dust Hood.....	1
20.....	TS-150302.....	Hex Socket Cap Screw * M6x10	1
21.....	MHA-C05	Spindle Pulley.....	1
22.....	TS-0680021.....	Flat Washer 1/4.....	1
23.....	TS-1503051.....	Hex Socket Cap Screw M6x20	1
24.....	MHA-C06	Spacer	2
25.....	TS-150304.....	Hex Socket Cap Screw M6x16	2
26.....	BB-6203ZZ.....	Ball Bearing.....	1
27.....	5FK-C06.....	Key 5x5x15	1
28.....	MHA-C07E.....	Cutterhead	1
29.....	TS-151302.....	Flat Head Screw..... M5x12	6
30.....	BB-6202ZZ.....	Ball Bearing.....	1
31.....	5BA-A28	C-Ring.....RTW35.....	1
32.....	MHA-C08	Bushing.....	1
33.....	MHA-C09	Gear.....	1
34.....	MHA-C10E.....	Chip Deflector	1
35.....	5AK-E128	Screw..... M6x12	3
36.....	MHA-C11E.....	Anti-Kickback Shaft	1
37.....	MGA-C30E	Anti-Kickback Finger.....	26
38.....	MGA-C34E	Anti-Kickback Collar	27
39.....	MGA-C31	Bracket	2
40.....	TS-155103.....	Lock Washer..... M5	4
41.....	TS-150201.....	Hex Socket Cap Screw M5x8	4
42.....	MHA-C12E.....	Lock Bar	3
44.....	JPM13-244	Hex Cap Bolt	18
46.....	MHA-C13	Knife	3
48.....	TS-1540071.....	Hex Nut M10x1.5.....	4
49.....	MGA-C07.....	Adjustment Screw.....	4
50.....	MGA-C05.....	Adjustment Screw.....	4
51.....	MGA-C06.....	Nut	4
52.....	MHA-C19	Warning Label (long)	1
53.....	PGE-B13	Bushing.....	1
54.....	MHA-C20	Washer.....	1
55.....	PJE-C03.....	Warning Label (small).....	1
56.....	MHA-C22W.....	Plate	1
57.....	TS-1533031.....	Screw..... M5x10	3
58.....	TS-1550031.....	Flat Washer M5.....	3
59.....	MHA-Y01AWE	Dust Chute	1
60.....	HS040703	Screw..... M6x8	3
61.....	TS-1550041.....	Flat Washer M6.....	3

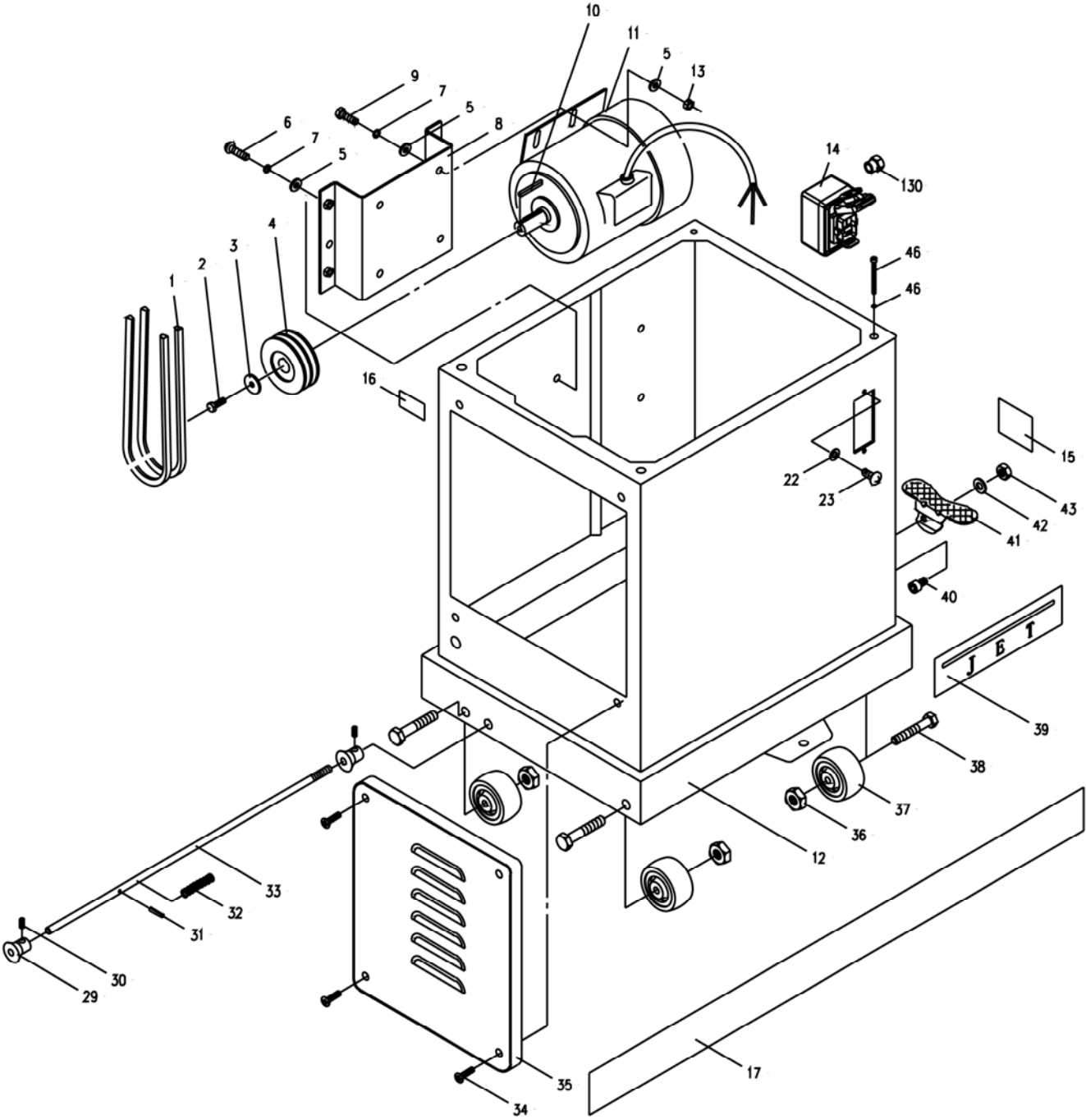
Gearbox Assembly



Gearbox Assembly

Index No.	Part No.	Description	Size	Qty.
.....	MA-GU.....	Gearbox Assembly(#'s 1-9, 11-12, 14, 16-32, 35-36).....		1
1.....	MHA-G01U.....	Gearbox Body.....		2
2.....	MHA-G02.....	Gear Shaft.....	10T.....	1
3.....	FK-A03.....	Key.....	3x3x8.....	2
4.....	MHA-G03U.....	Gear.....	44T.....	1
5.....	PGA-M15.....	Bushing.....		5
6.....	MHA-G04U.....	Gear.....	43T.....	1
7.....	MGA-C28.....	Pin.....	4x16.....	2
8.....	MHA-G05U.....	Gear.....	47T.....	1
9.....	5FA-A07.....	C-Ring.....	STW12.....	3
10.....	JPM13-310.....	Chain Cover (Left).....		1
11.....	MHA-G06E.....	Gear Box Cover.....		1
12.....	TS-150305.....	Hex Socket Cap Screw.....	M6x20.....	4
13.....	TS-1550041.....	Flat Washer.....	M6.....	4
14.....	TS-0680021.....	Flat Washer.....	1/4.....	1
15.....	JPM13-315.....	Pan Head Screw.....	M6x8.....	4
16.....	MHA-G08U.....	Gear.....	22T.....	1
17.....	PGA-M12.....	Bushing.....		1
18.....	MHA-G09.....	Stud Bolt.....	M6x1.0.....	1
19.....	MHA-G18.....	Key.....	5x5x9.....	1
20.....	MHA-G10N.....	Shaft.....		1
21.....	PGA-C17.....	Sprocket.....		1
22.....	MGA-C32.....	Sprocket.....		1
23.....	5FA-A10.....	C-Ring.....	STW15.....	1
24.....	MHA-G11U.....	Gear.....	40T.....	1
25.....	5EB-A08.....	Washer.....		1
26.....	TS-150303.....	Hex Socket Cap Screw.....		2
27.....	5FK-B02.....	Key.....	4x4x7.....	2
28.....	MHA-G12U.....	Shaft.....		1
29.....	MHA-G13U.....	Gear.....	29T.....	1
30.....	MHA-G14U.....	Bushing.....		1
31.....	MHA-G15N.....	Bushing.....		2
32.....	MHA-G16.....	Washer.....		2
35.....	5FK-B05.....	Key.....	4x4x12.....	3
36.....	MHA-G19.....	Gear Shaft.....	10T.....	3
37.....	JPM13-337.....	Chain Cover (Right).....		1

Stand and Motor Assembly



Stand and Motor Assembly

1.....	VB-M45.....	V-Belt.....	2
2.....	TS-0051011.....	Hex Cap Bo.....	5/16-18NCx1/2..... 1
3.....	PJA-C03.....	Washer.....	1
4.....	MHA-S01.....	Motor Pulley.....	1
5.....	TS-1550061.....	Flat Washer.....	M8..... 12
6.....	TS-2288202.....	Round Cap Hex Socket Slot Screw.....	M8x1.25x20..... 4
7.....	TS-1551061.....	Lock Washer.....	8
8.....	MHD-S02.....	Motor Bracket.....	1
9.....	TS-1490031.....	Hex Cap Bolt.....	M8x1.25x20..... 4
10.....	5FK-C13A.....	Key.....	5x5x30..... 1
11.....	MHA-S02AWE.....	Motor.....	1-1/2HP 115/230V... 1
12.....	MHD-S01E.....	Stand.....	1
13.....	TS-1540061.....	Hex Nut.....	M8x1.25..... 4
14.....	JPM13-414.....	Magnetic Switch.....	1
15.....	JPM13-415.....	Brake Label.....	1
16.....	JPM13-416.....	Motor Label.....	1
17.....	JPM13-417.....	JET Strip.....	1
22.....	5EB-A04.....	Washer.....	M5..... 2
23.....	5CD-C06B.....	Screw.....	3/16-24NCx12..... 2
29.....	PJN-S04.....	Eccentric Cam.....	2
30.....	TS-1523011.....	Set Screw.....	M6x6..... 2
31.....	HG010911.....	Spring Pin.....	4x20..... 1
32.....	PG010033.....	Spring.....	1
33.....	MHD-S03.....	Shaft.....	1
34.....	5EA-E06A.....	Flat Head Screw.....	M6x12..... 4
35.....	PJ100001.....	Door.....	1
36.....	TS-0561031.....	Lock Nut.....	3/8-16NC..... 4
37.....	PJE-S05.....	Wheel.....	4
38.....	5CA-H16B.....	Hex Cap Bolt.....	3/8-16NCx2-1/2..... 4
39.....	PG-M02.....	JET Label.....	1
40.....	TS-1503031.....	Hex Socket Cap Screw.....	M6x12..... 1
41.....	PJN-S02.....	Foot Brake.....	1
42.....	TS-1550071.....	Washer.....	M10..... 1
43.....	TS-2342101.....	Lock Nut.....	M10..... 1

JPM-13CS

708524 M

230/50/1

	colour of strands	Litzenfarben	couleur des cordons
BK	black	schwarz	noir
WH	white	weiß	blanc
BU	blue	blau	bleu
YE	yellow	gelb	jaune
RD	red	rot	rouge
BN	brown	braun	brun
GY	grey	grau	gris
GNYE	green-yellow	grün-gelb	vert-jaune
OG	orange	orange	orange
VT	violet	violett	violet

	meaning of symbol	Bedeutung der Zeichen	interprétation
M	motor	Motor	moteur
S	switch	Schalter	interrupteur
C	condenser	Kondensator	condensateur
E	electronic unit	Elektronik Einheit	unité électronique
F	fuse	Sicherung	fusible
RS	reversing switch	Drehrichtungsschalter	commu. droite/gauche
CS	centrifugal switch	Fliehkraftschalter	déclencheur centrifuge
OL	overload cut-off	Überlastschuttschalter	déclencheur surcharge
LS	limit switch	Positionsendschalter	micro

